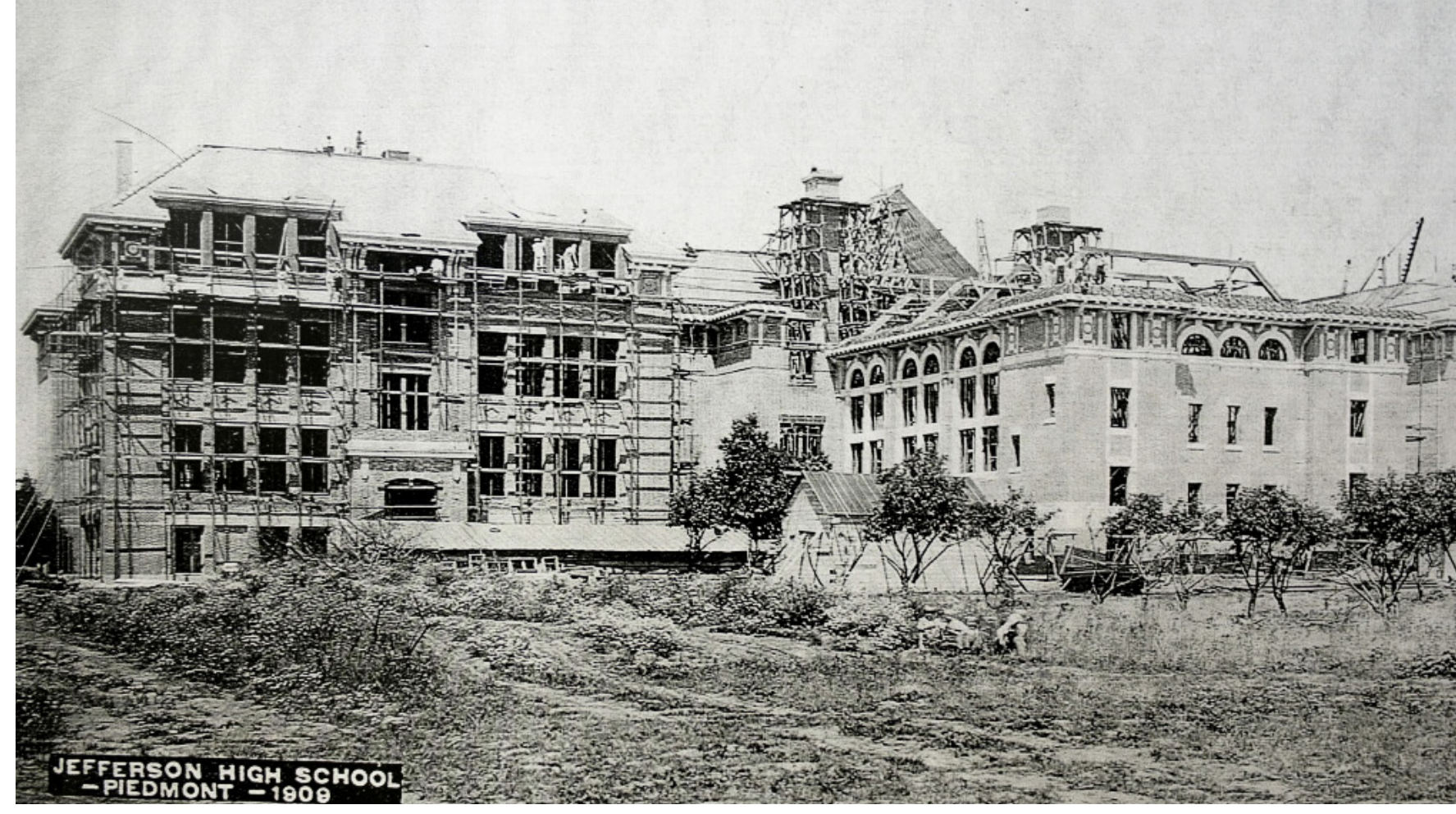


JEFFERSON HIGH SCHOOL ORIGINAL + CURRENT CONDITIONS



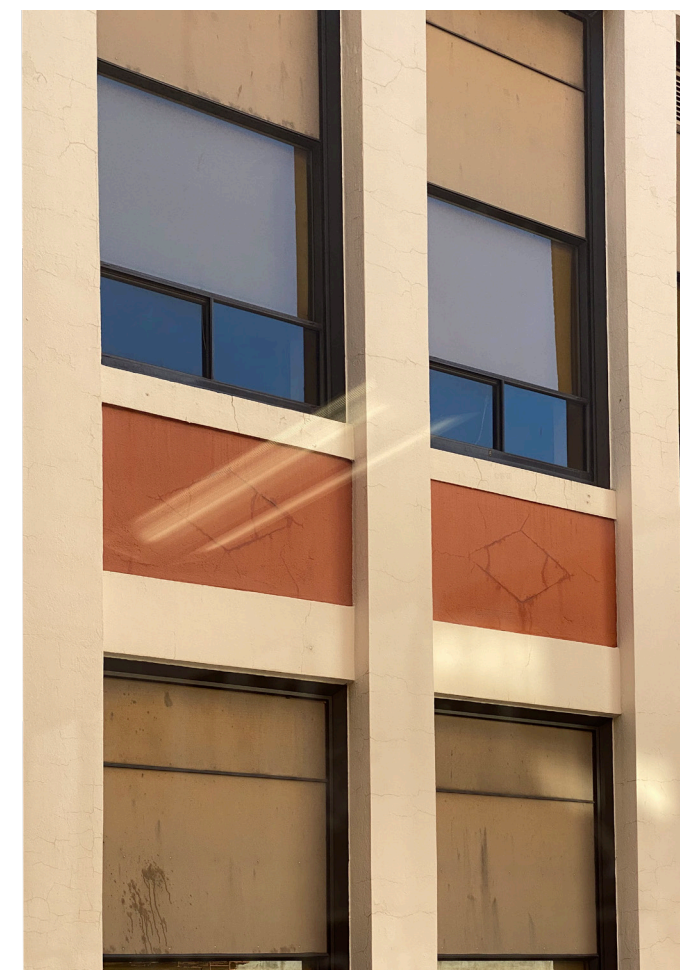
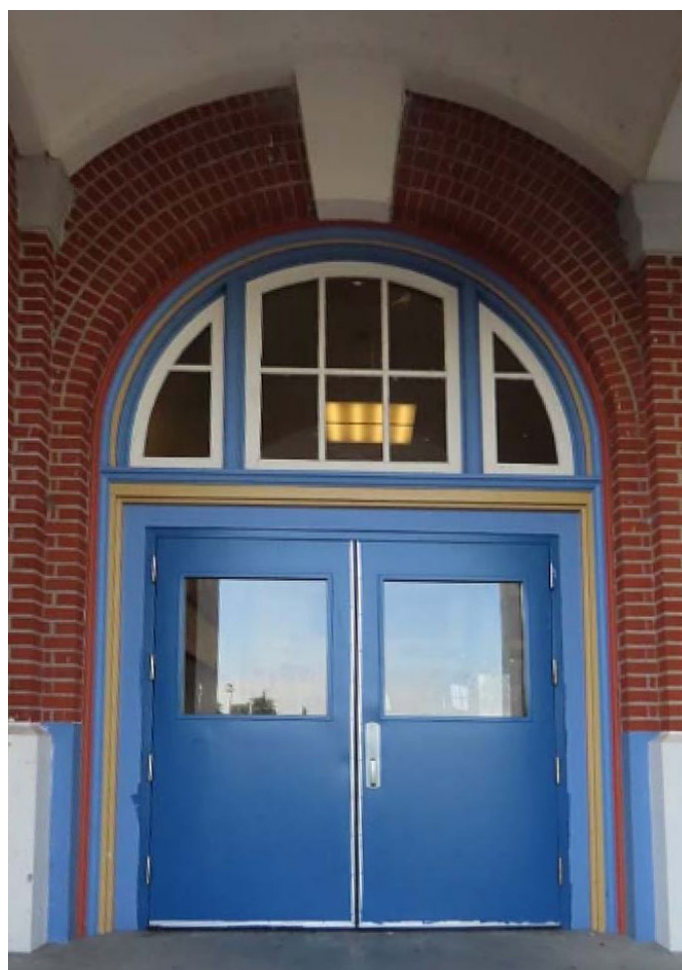
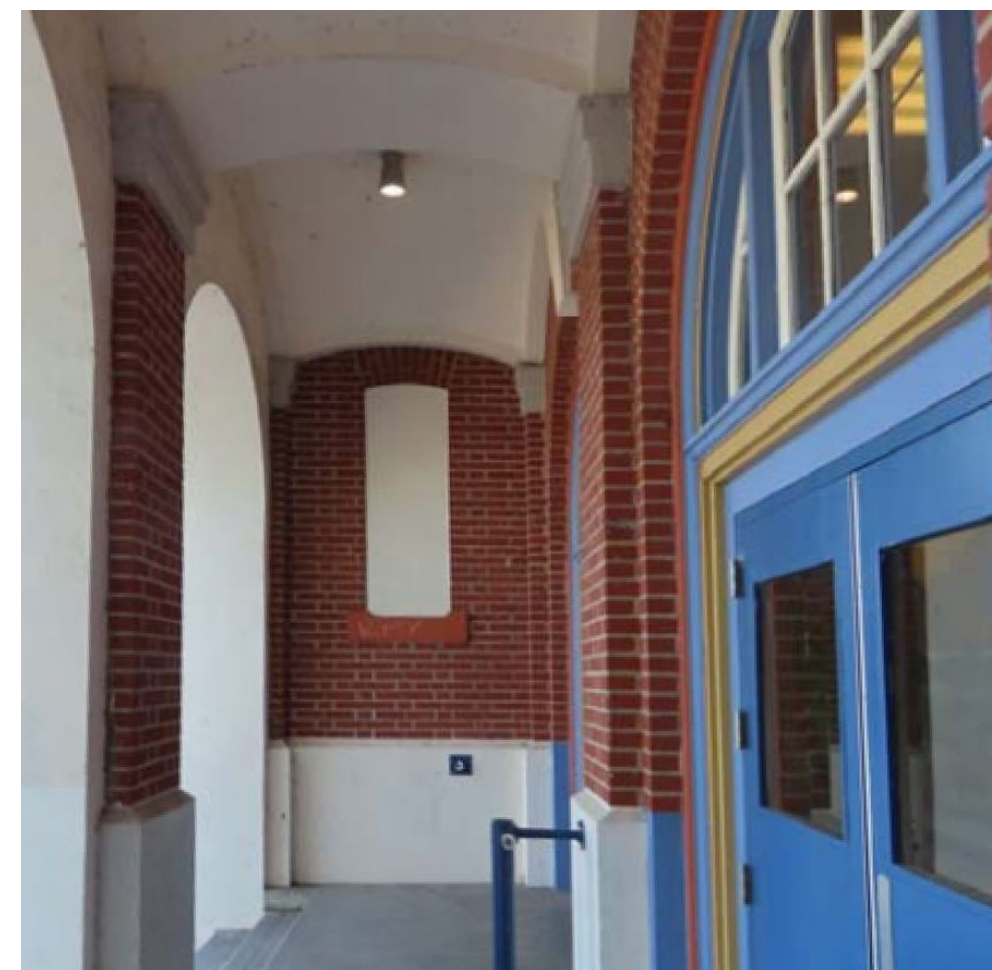
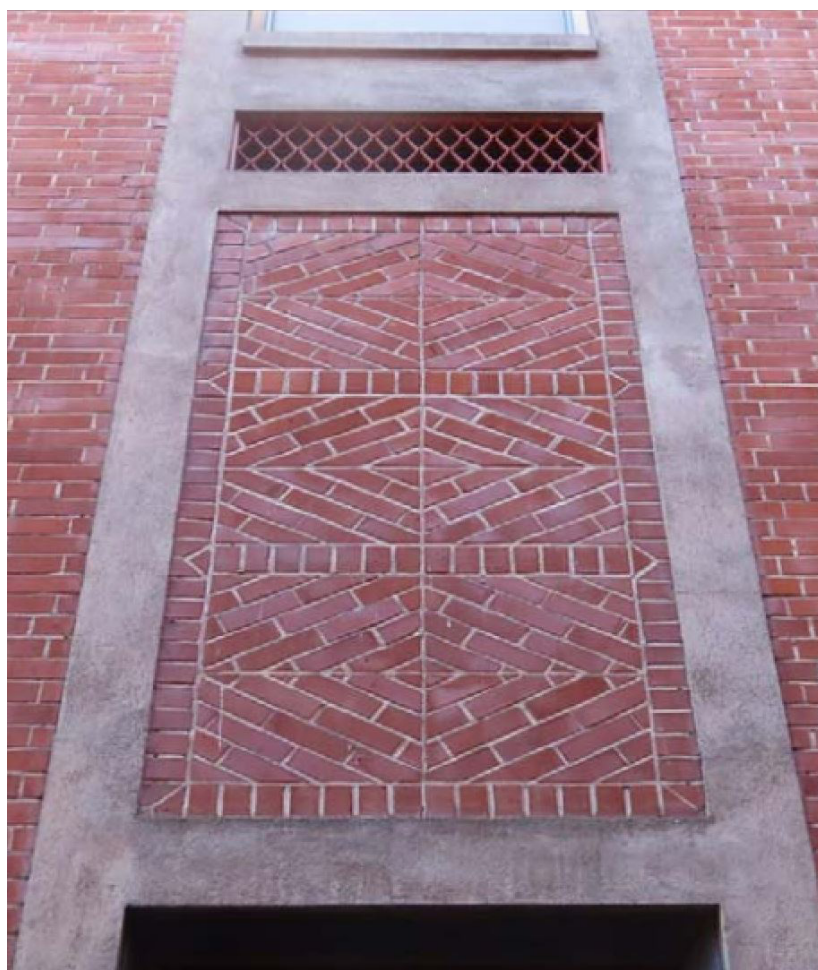
1909 - As Originally Built

- Red Brick
- Cement Plaster Details
- Hipped Roof
- Deep Eaves
- Dormers
- Galvanized Iron Details
- Wood Windows w/ divided lites
- Arched Entries



1909 - Today's Conditions

- Plaster covering brick details
- Painted plaster trim
- Simpler roof with no eaves
- Reduced windows, no divided lites

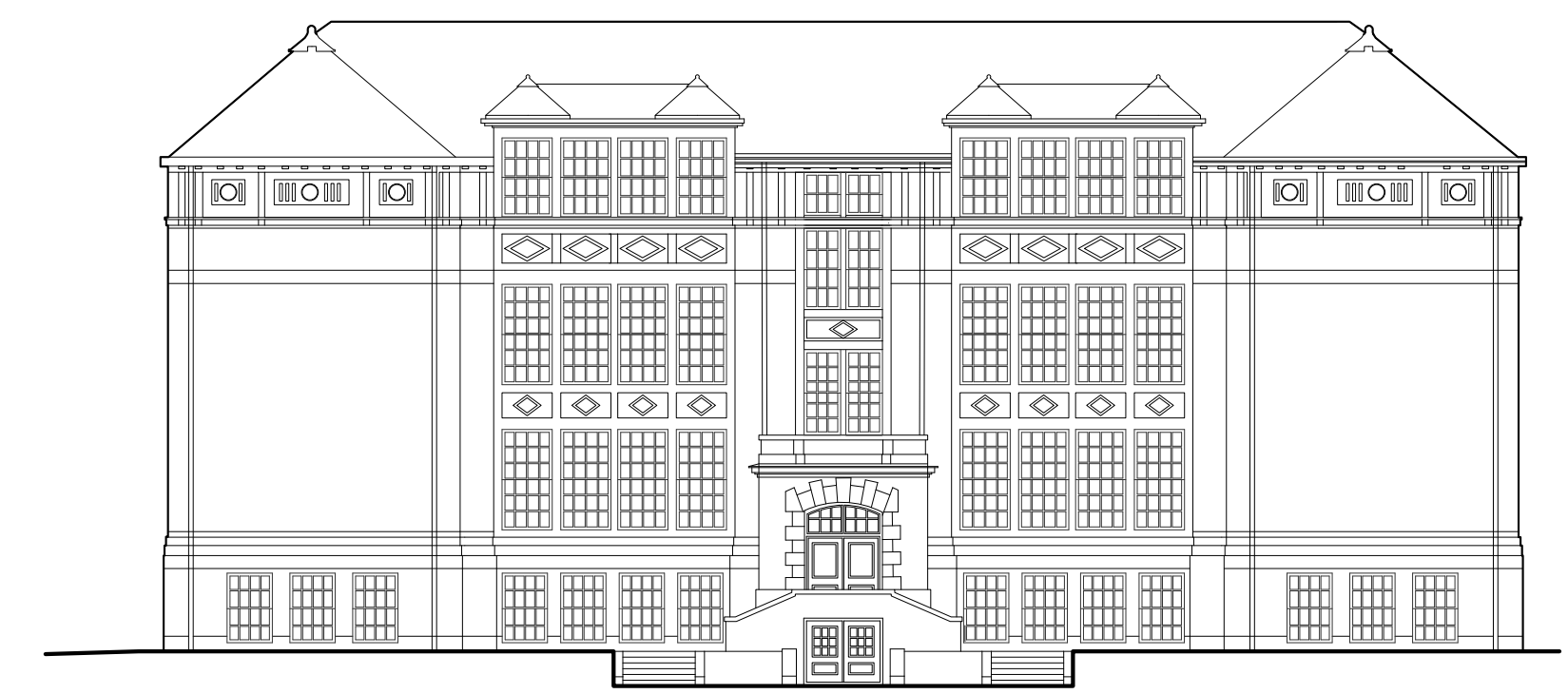


Details of 1909 + 1928

- Brick + Concrete Details
- Arched Entry ways
- Original Trim intact around doors w/ arched transom windows
- Plaster covering original brick details below windows



ORIGINAL NORTH ELEVATION



ORIGINAL EAST ELEVATION



CURRENT NORTH ELEVATION



CURRENT EAST ELEVATION

WHAT IS THE DESIGN PROCESS MOVING FORWARD?

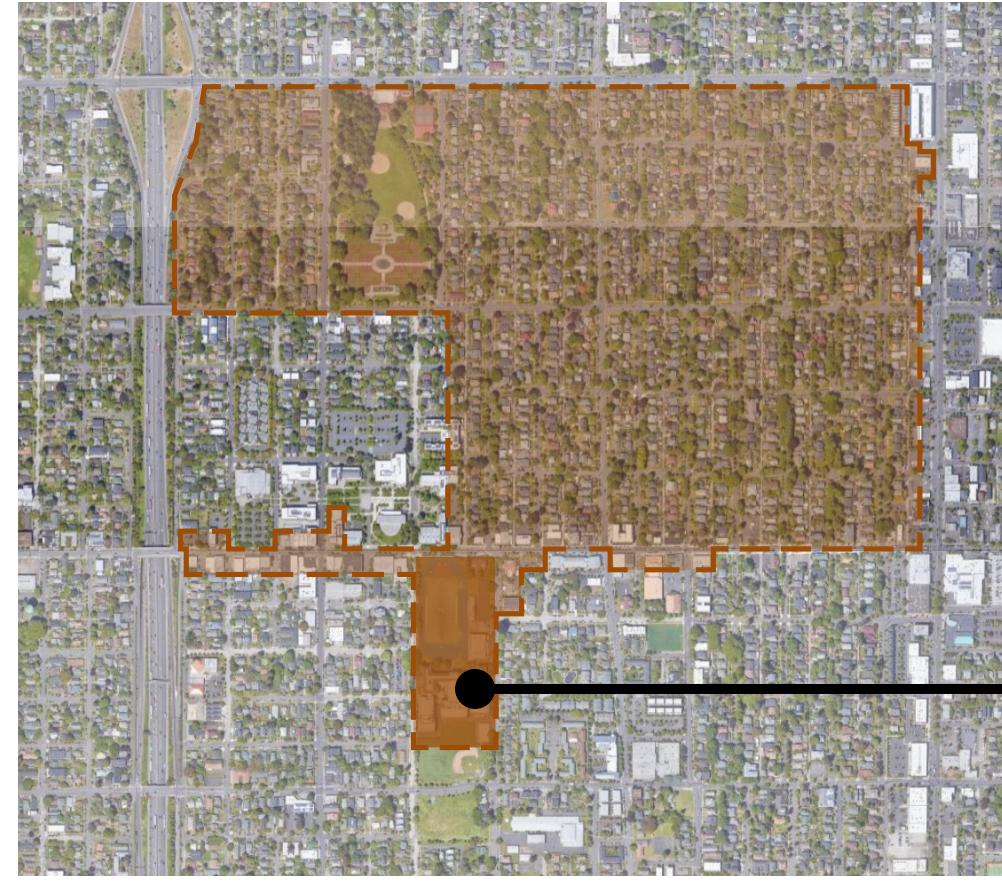
Historic Landmarks Process

What is the Historic Landmarks Commission?

- A seven member committee that provides leadership and expertise on maintaining and enhancing Portland's historic and architecture heritage
- The committee members have a demonstrated interest or knowledge of historic preservation. Many of them have professional experience in historic preservation or related fields.
- Members are appointed by the mayor and confirmed by City Council

Why does Landmarks review JHS?

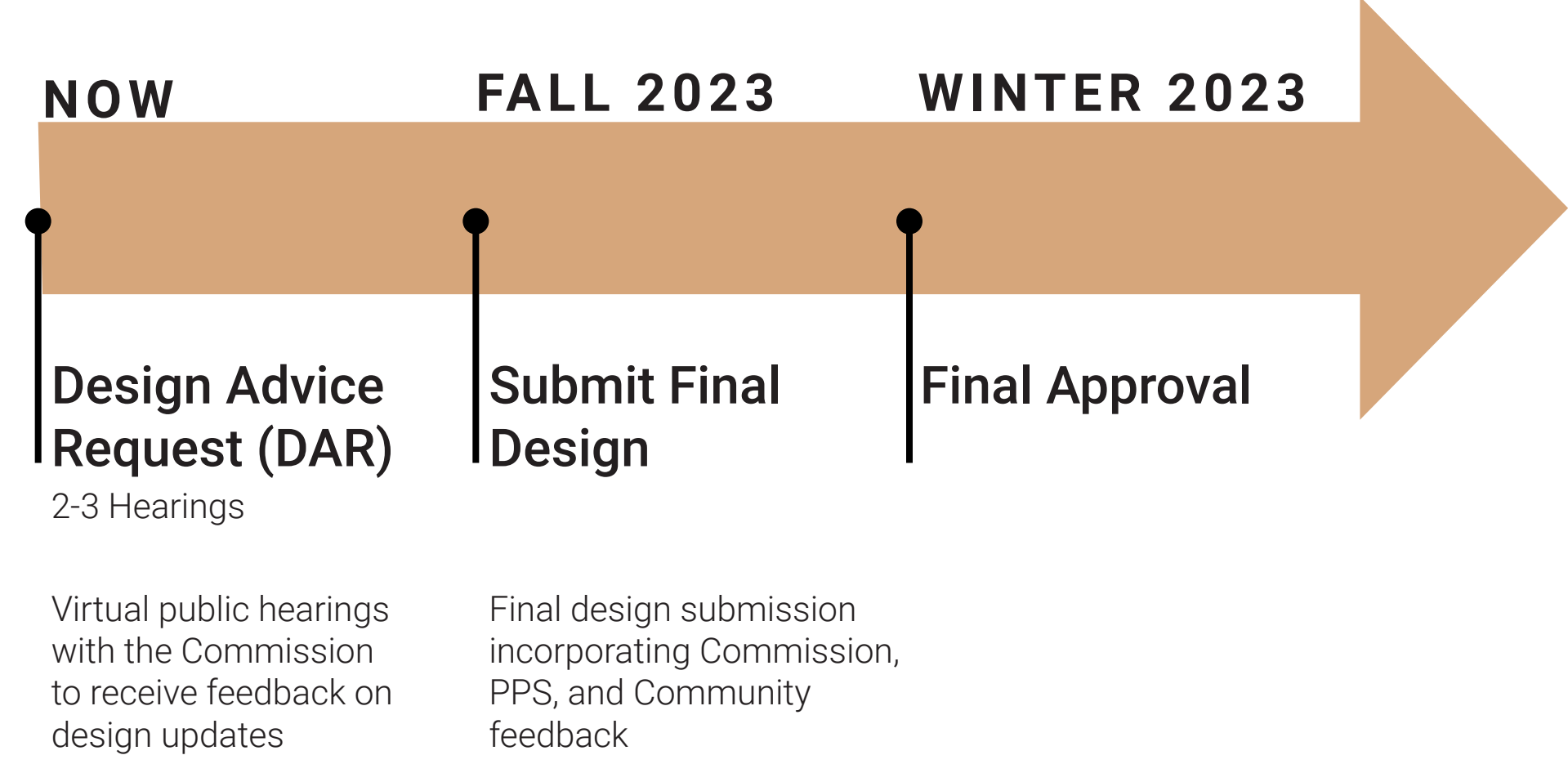
- Jefferson HS is located in the Piedmont Conservation District.



JHS is a contributing resource

Historic, Conservation, and National Register Districts are collections of historic resources that in and of themselves may not be eligible for individual designation but together convey a significant story. Contributing resources were built during the district's period of historic significance and retain physical integrity from the historic period.

What does the Landmarks process look like?



What have we heard so far?

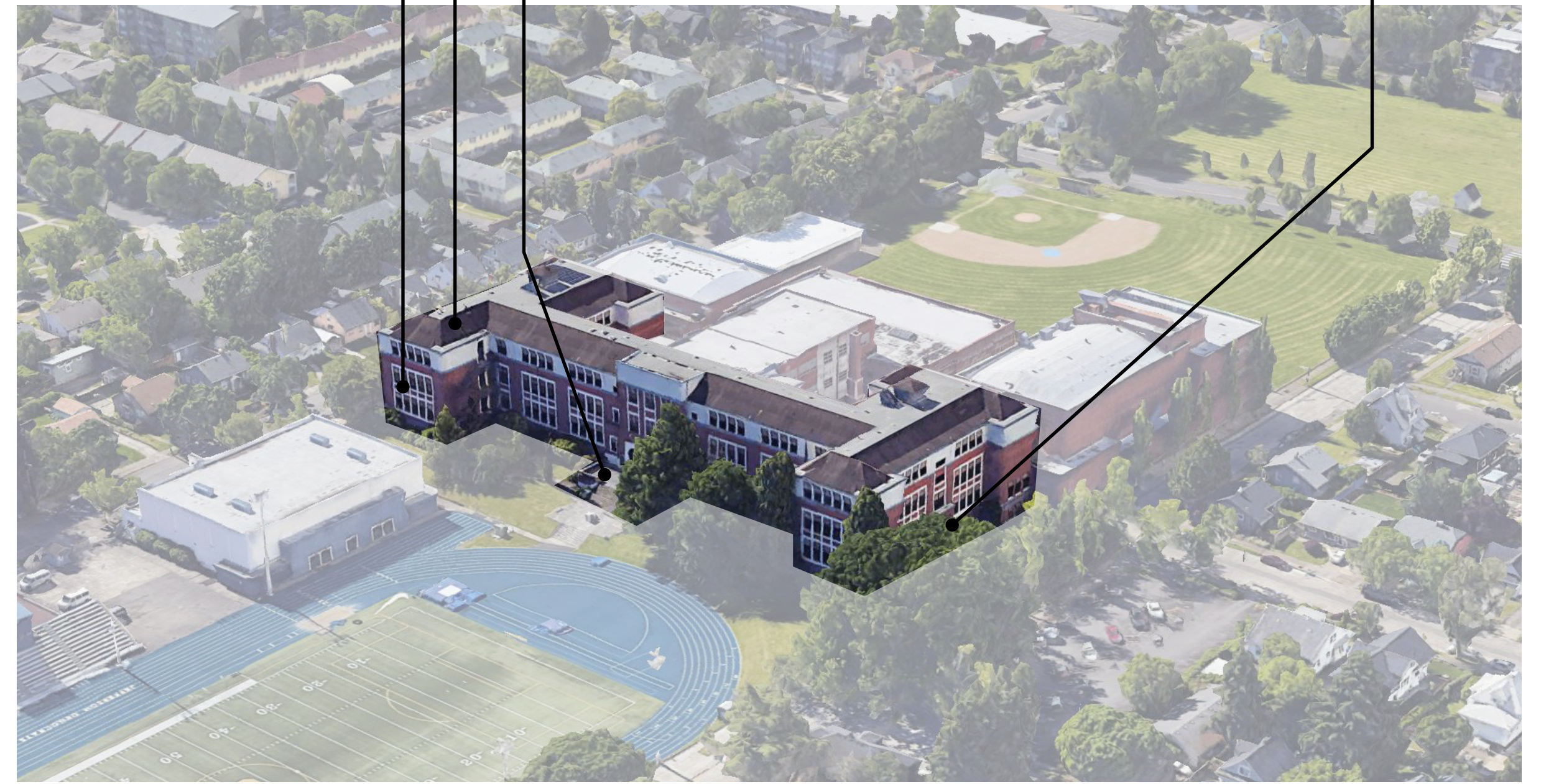
Historic Landmarks Commission Comments:

- Windows: Size + Location
- Retain original details that still exist
- Central stairs to the north

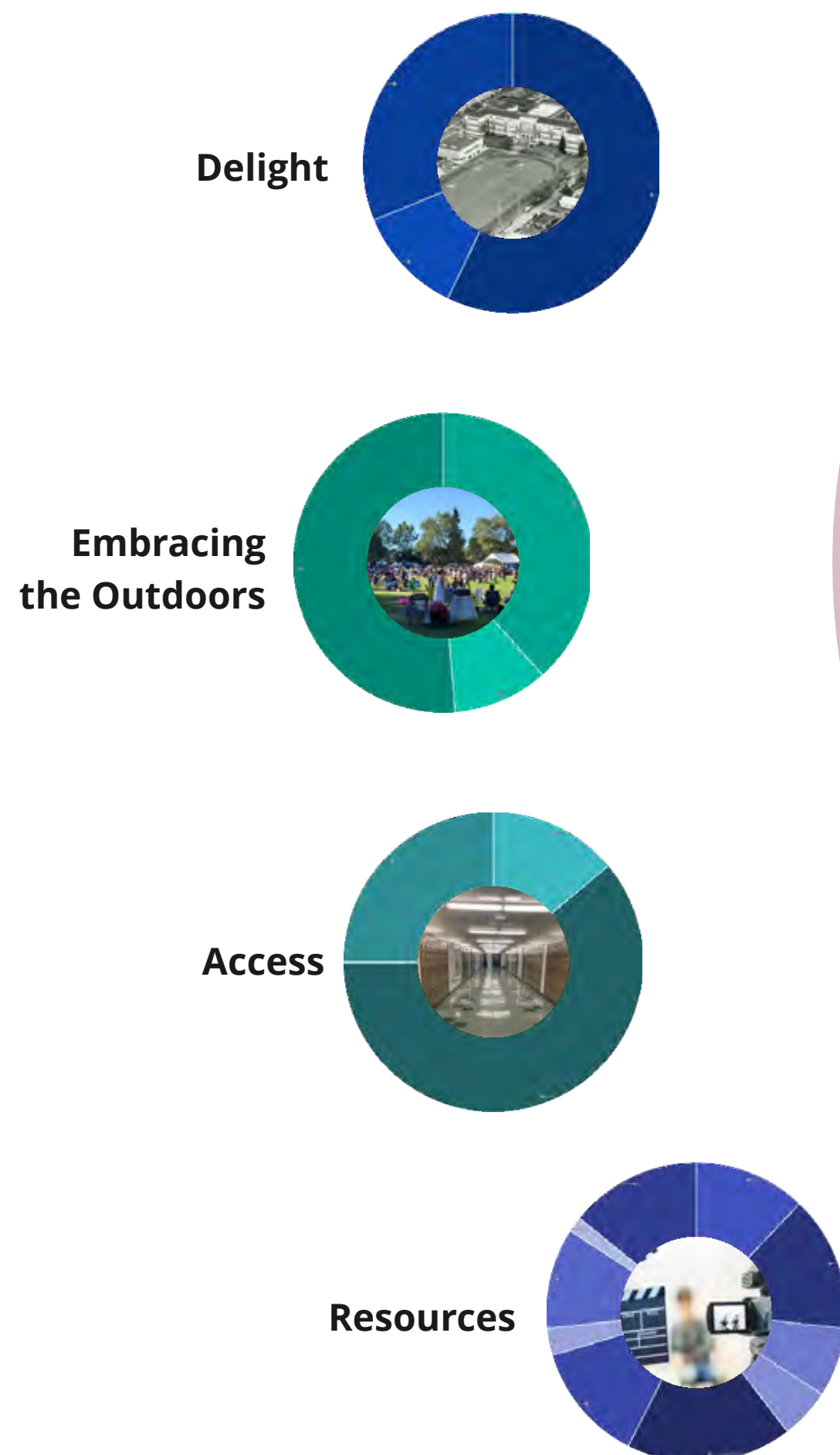


Massing + Form:

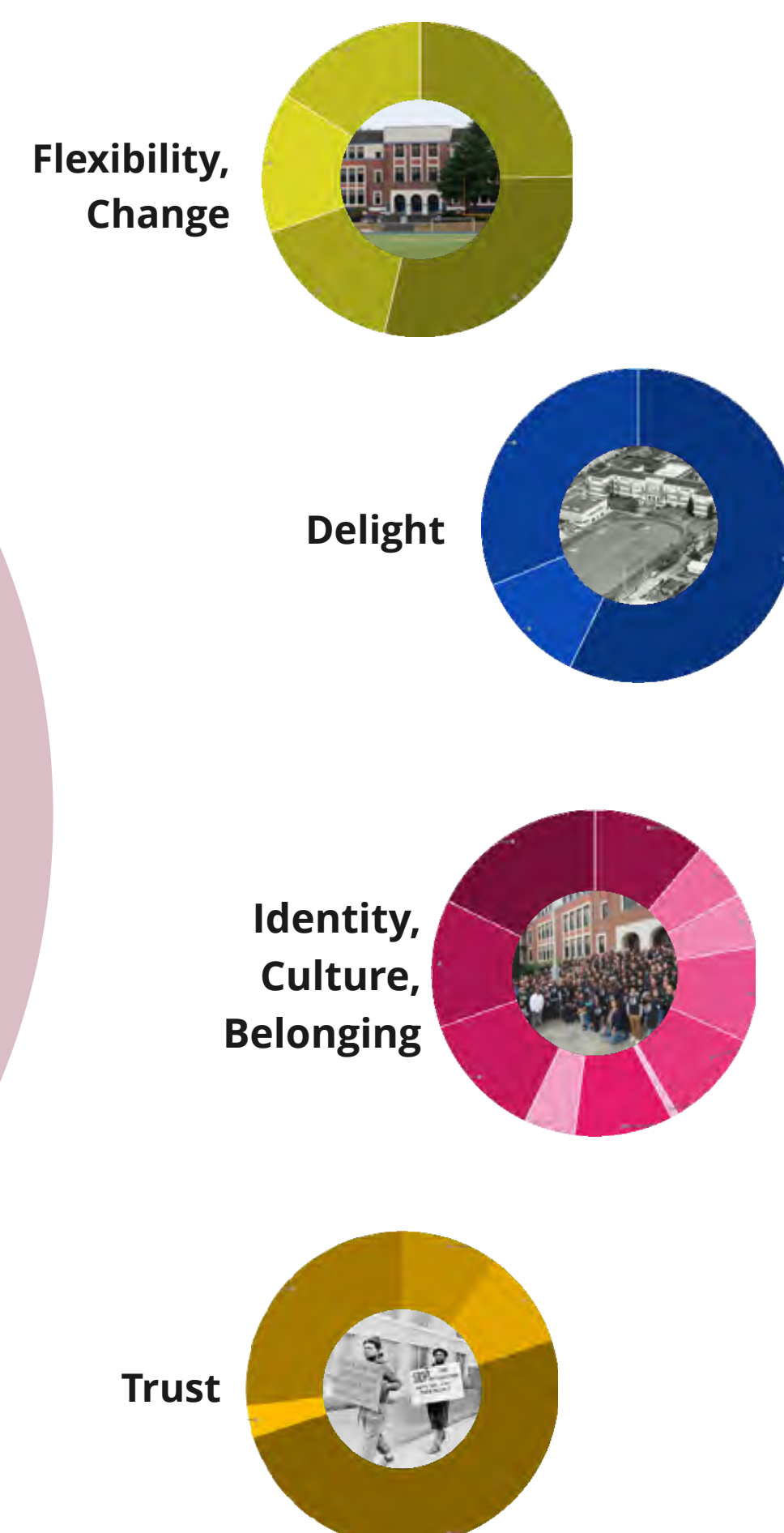
- Three story + basement height massing
- Flat on gable roof forms
- Main Entry with central stairs at North
- Recessed entries at East and West



Narrative Themes



How can these themes be reflected in the design of Jefferson High School?



HOW DOES THE PROGRAM IMPACT WHAT THE BUILDING LOOKS LIKE?

THEATER
 • no windows



Lincoln High School

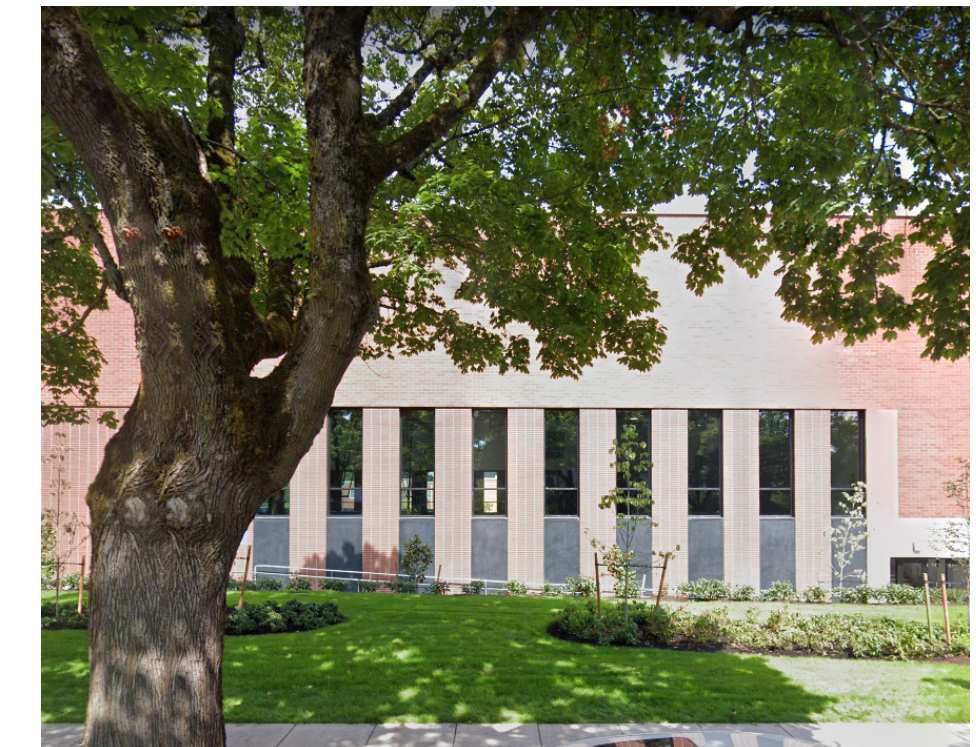


Grant High School

GYMS
 • few windows
 • clerestory windows



McDaniel High School



Grant High School



BAND
 • higher windows
 with instrument
 storage typ. on
 walls



Lincoln High School



McDaniel High School



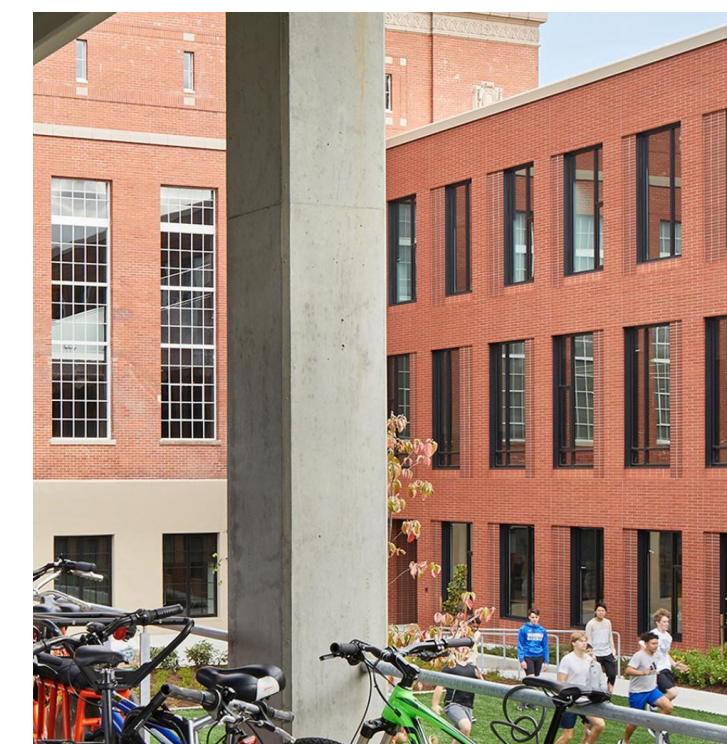
Roosevelt High School



CLASSROOMS
 • higher window
 sill, especially in
 science + CTE



McDaniel High School



Grant High School



FLEX SPACES + LIBRARY
 • opportunity
 for larger of
 windows



Grant High School



McDaniel High School



COMMONS
 • lots of windows
 • maximizes daylight



McDaniel High School

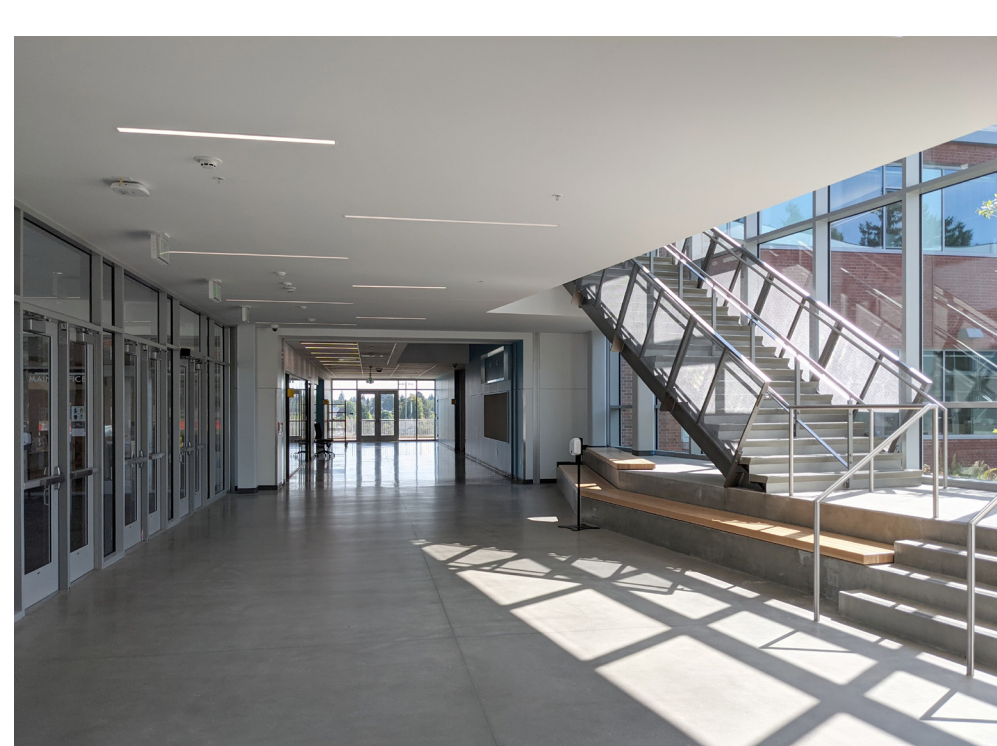


Franklin High School

ENTRIES
 • lots of windows
 • secure



McDaniel High School

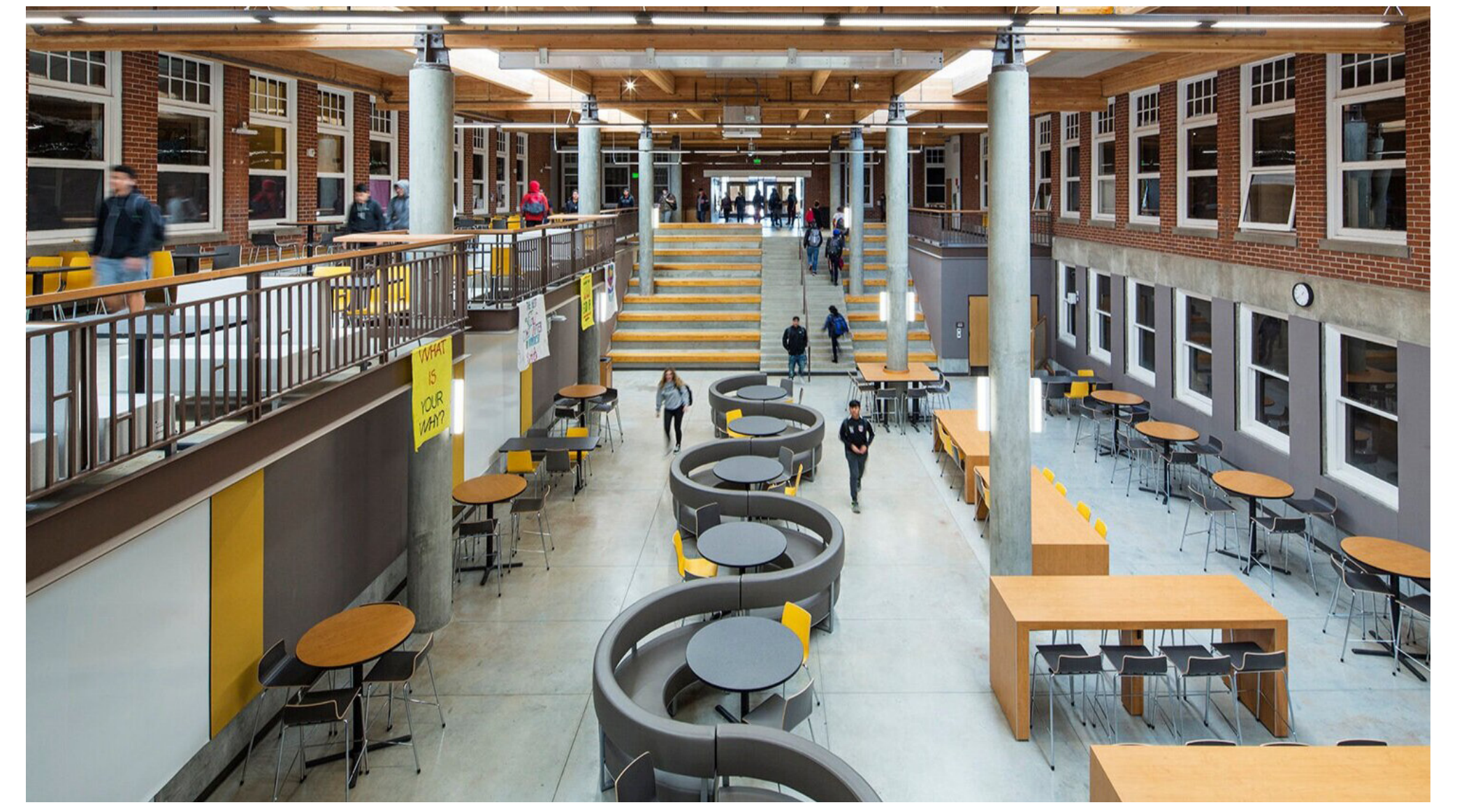


Franklin High School

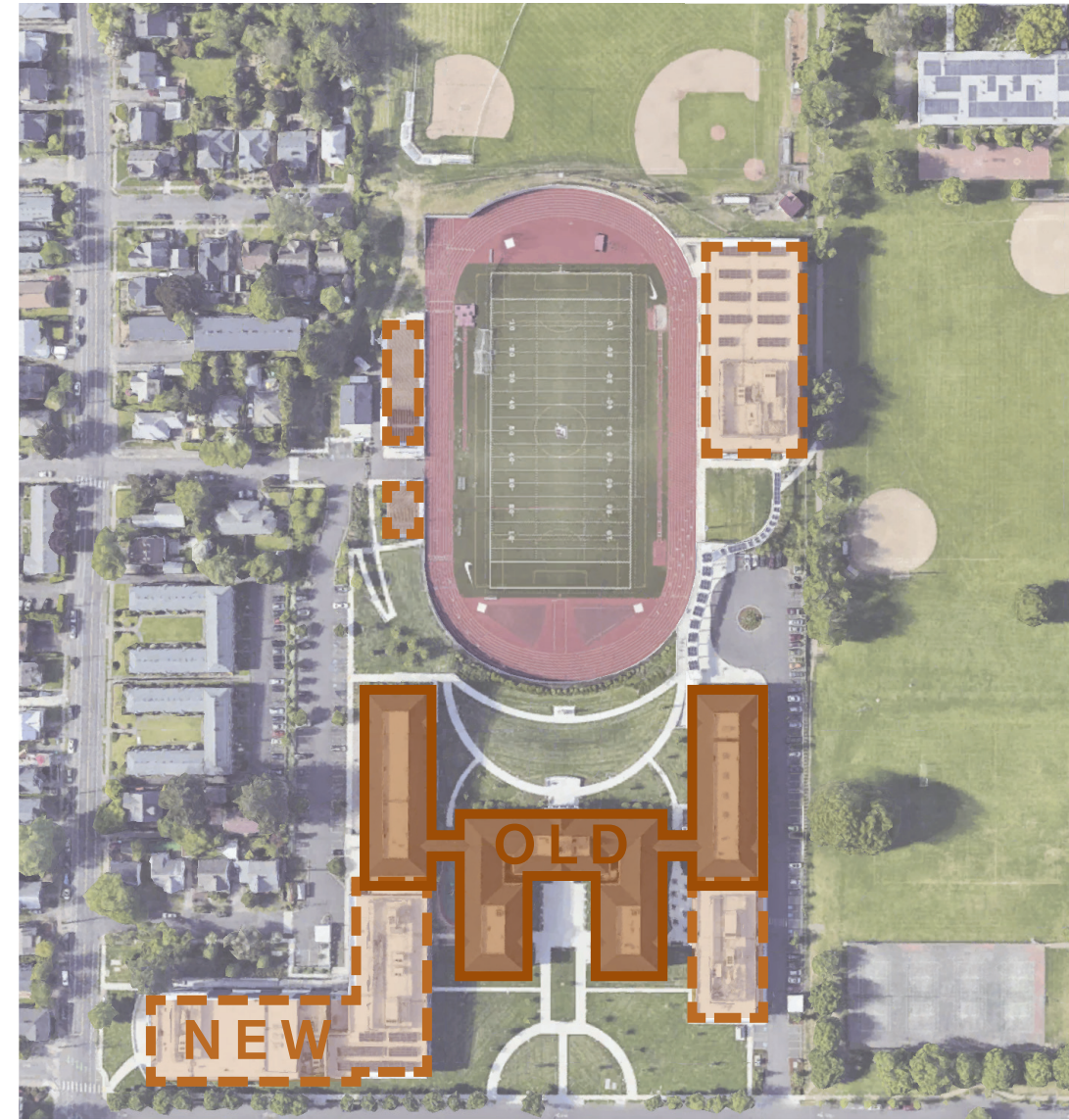


WHAT DO OTHER PPS MODERNIZATIONS LOOK LIKE?

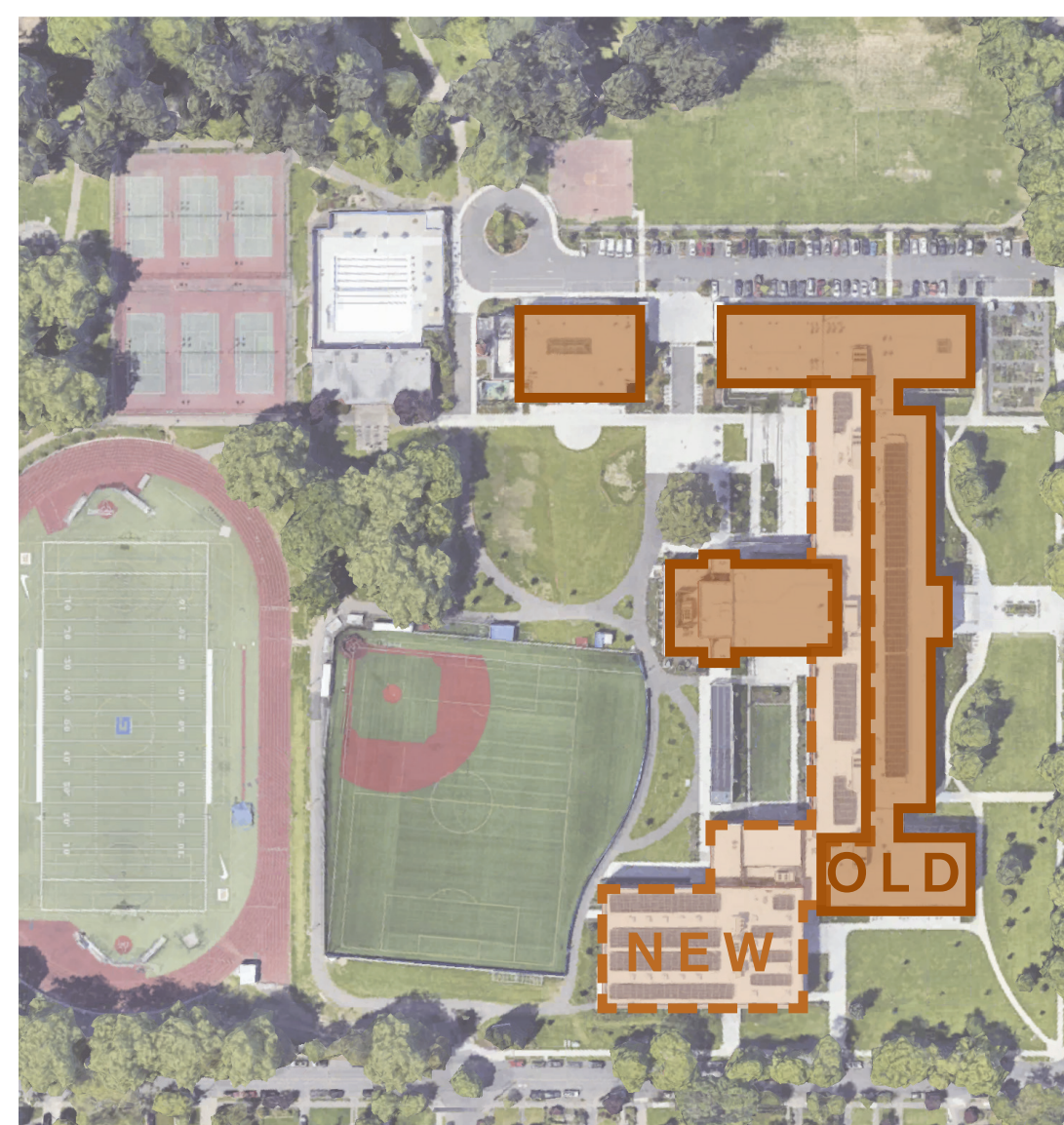
ROOSEVELT HIGH SCHOOL - BASSETTI ARCHITECTS



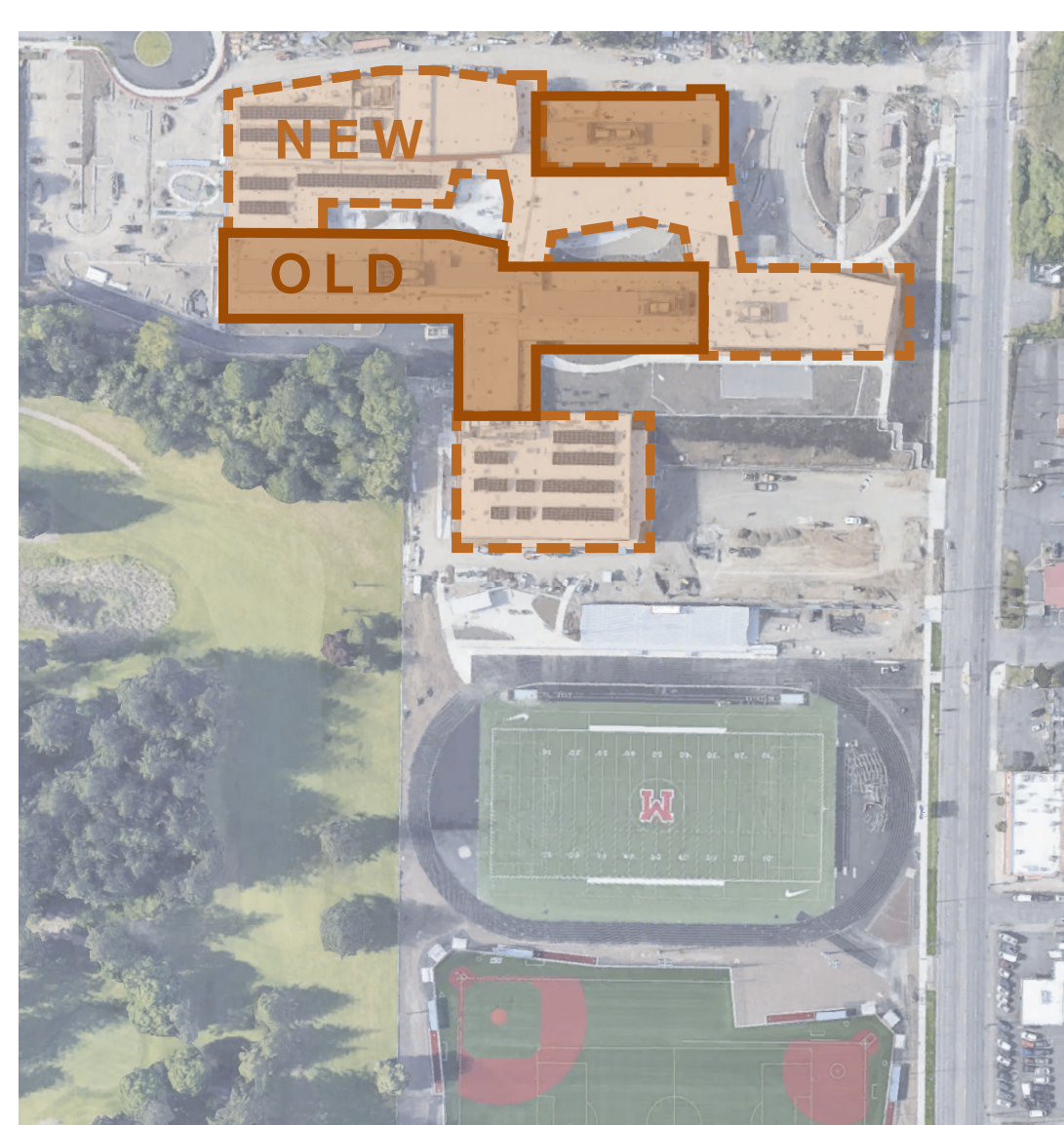
FRANKLIN HIGH SCHOOL - IBI GROUP



GRANT HIGH SCHOOL - MAHLUM ARCHITECTS



MCDANIEL HIGH SCHOOL - OPSIS ARCHITECTURE



JEFFERSON HIGH SCHOOL - BORA + LEVER

